

# Key-of-the-Week Technique

## C MAJOR

### Tuba

**A** Major Scale

**B** Thirds

**C** Arban Arpeggio 1

**D** Arban Arpeggio 2

**E** Clarke Study No. 1

**F** Clarke Study No. 2

**G** Arban Intervals

**H** Harmonic minor

**I** Melodic minor

# Key-of-the-Week Technique

## F MAJOR

### Tuba

**A** Major Scale

**B** Thirds

**C** Arban Arpeggio 1

**D** Arban Arpeggio 2

**E** Clarke Study No. 1

**F** Clarke Study No. 2

**G** Arban Intervals

**H** Harmonic minor

**I** Melodic minor

# Key-of-the-Week Technique

## Bb MAJOR

### Tuba

**A** Major Scale

**B** Thirds

**C** Arban Arpeggio 1

**D** Arban Arpeggio 2

**E** Clarke Study No. 1

**F** Clarke Study No. 2

**G** Arban Intervals

**H** Harmonic minor

**I** Melodic minor

# Key-of-the-Week Technique

## E♭ MAJOR

### Tuba

**A** Major Scale

**B** Thirds

**C** Arban Arpeggio 1

**D** Arban Arpeggio 2

**E** Clarke Study No. 1

**F** Clarke Study No. 2

**G** Arban Intervals

**H** Harmonic minor

**I** Melodic minor

# Key-of-the-Week Technique

## Ab MAJOR

### Tuba

**A** Major Scale

**B** Thirds

**C** Arban Arpeggio 1

**D** Arban Arpeggio 2

**E** Clarke Study No. 1

**F** Clarke Study No. 2

**G** Arban Intervals

**H** Harmonic minor

**I** Melodic minor

# Key-of-the-Week Technique

## Db MAJOR

### Tuba

**A** Major Scale

**B** Thirds

**C** Arban Arpeggio 1

**D** Arban Arpeggio 2

**E** Clarke Study No. 1

**F** Clarke Study No. 2

**G** Arban Intervals

**H** Harmonic minor

**I** Melodic minor

# Key-of-the-Week Technique

## Gb MAJOR

### Tuba

**A** Major Scale

**B** Thirds

**C** Arban Arpeggio 1

**D** Arban Arpeggio 2

**E** Clarke Study No. 1

**F** Clarke Study No. 2

**G** Arban Intervals

**H** Harmonic minor

**I** Melodic minor

# Key-of-the-Week Technique

## G MAJOR

### Tuba

**A** Major Scale



Musical notation for the Major Scale in G major, 4/4 time signature.

**B** Thirds



Musical notation for Thirds in G major, 4/4 time signature.

**C** Arban Arpeggio 1



Musical notation for Arban Arpeggio 1 in G major, 6/8 time signature.



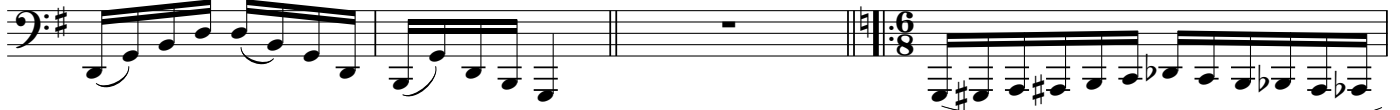
Musical notation for Arban Arpeggio 1 in G major, 2/4 time signature.

**D** Arban Arpeggio 2



Musical notation for Arban Arpeggio 2 in G major, 2/4 time signature.

**E** Clarke Study No. 1



Musical notation for Clarke Study No. 1 in G major, 6/8 time signature.



Musical notation for Clarke Study No. 1 in G major, 6/8 time signature.

**F** Clarke Study No. 2



Musical notation for Clarke Study No. 2 in G major, common time signature.

**G** Arban Intervals



Musical notation for Arban Intervals in G major, 4/4 time signature.

**H** Harmonic minor



Musical notation for Harmonic minor in G major, 4/4 time signature.

**I** Melodic minor



Musical notation for Melodic minor in G major, 4/4 time signature.



# Key-of-the-Week Technique

## D MAJOR

### Tuba

**A** Major Scale

**B** Thirds

**C** Arban Arpeggio 1

**D** Arban Arpeggio 2

**E** Clarke Study No. 1

**F** Clarke Study No. 2

**G** Arban Intervals

**H** Harmonic minor

**I** Melodic minor

# Key-of-the-Week Technique

## A MAJOR

### Tuba

**A** Major Scale

Exercise A: Major Scale. Bass clef, key signature of one sharp (F#), 4/4 time signature. The scale is written in a single line, starting on the first space (F#) and ascending to the first line (C).

**B** Thirds

Exercise B: Thirds. Bass clef, key signature of one sharp (F#), 4/4 time signature. The exercise consists of a whole rest followed by a series of eighth notes in pairs, each pair forming a third.

**C** Arban Arpeggio 1

Exercise C: Arban Arpeggio 1. Bass clef, key signature of one sharp (F#), 6/8 time signature. The exercise consists of a whole rest followed by a series of eighth notes in groups of three, each group forming an arpeggio.

**D** Arban Arpeggio 2

Exercise D: Arban Arpeggio 2. Bass clef, key signature of one sharp (F#), 2/4 time signature. The exercise consists of a series of eighth notes in groups of three, each group forming an arpeggio.

**E** Clarke Study No. 1

Exercise E: Clarke Study No. 1. Bass clef, key signature of one sharp (F#), 6/8 time signature. The exercise consists of a series of eighth notes in groups of three, each group forming an arpeggio.

**F** Clarke Study No. 2

Exercise F: Clarke Study No. 2. Bass clef, key signature of one sharp (F#), common time signature. The exercise consists of a series of eighth notes in groups of three, each group forming an arpeggio.

**G** Arban Intervals

Exercise G: Arban Intervals. Bass clef, key signature of one sharp (F#), 4/4 time signature. The exercise consists of a series of eighth notes in groups of three, each group forming an interval.

**H** Harmonic minor

Exercise H: Harmonic minor. Bass clef, key signature of one sharp (F#), 4/4 time signature. The exercise consists of a series of eighth notes in groups of three, each group forming a harmonic minor scale.

**I** Melodic minor

Exercise I: Melodic minor. Bass clef, key signature of one sharp (F#), 4/4 time signature. The exercise consists of a series of eighth notes in groups of three, each group forming a melodic minor scale.

# Key-of-the-Week Technique

## E MAJOR

### Tuba

**A** Major Scale



**B** Thirds



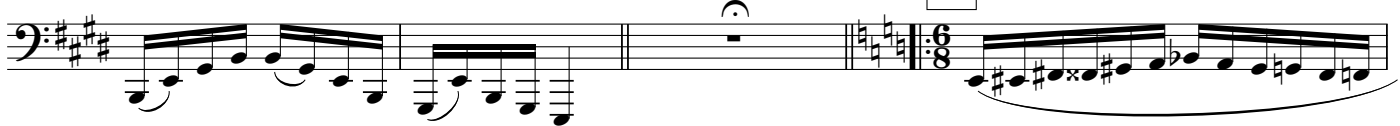
**C** Arban Arpeggio 1



**D** Arban Arpeggio 2



**E** Clarke Study No. 1



**F** Clarke Study No. 2



**G** Arban Intervals



**H** Harmonic minor



**I** Melodic minor



# Key-of-the-Week Technique

## B MAJOR

### Tuba

**A** Major Scale

**B** Thirds

**C** Arban Arpeggio 1

**D** Arban Arpeggio 2

**E** Clarke Study No. 1

**F** Clarke Study No. 2

**G** Arban Intervals

**H** Harmonic minor

**I** Melodic minor

# Key-of-the-Week Technique

## F# MAJOR

### Tuba

**A** Major Scale



**B** Thirds



**C** Arban Arpeggio 1



**D** Arban Arpeggio 2



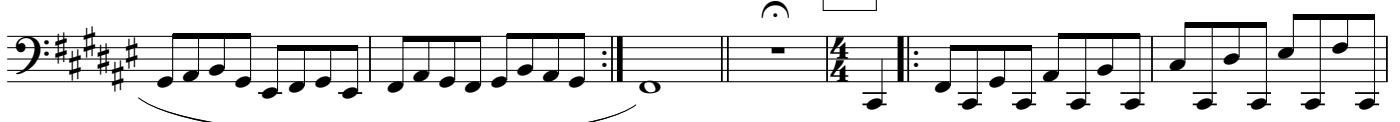
**E** Clarke Study No. 1



**F** Clarke Study No. 2



**G** Arban Intervals



**H** Harmonic minor



**I** Melodic minor

